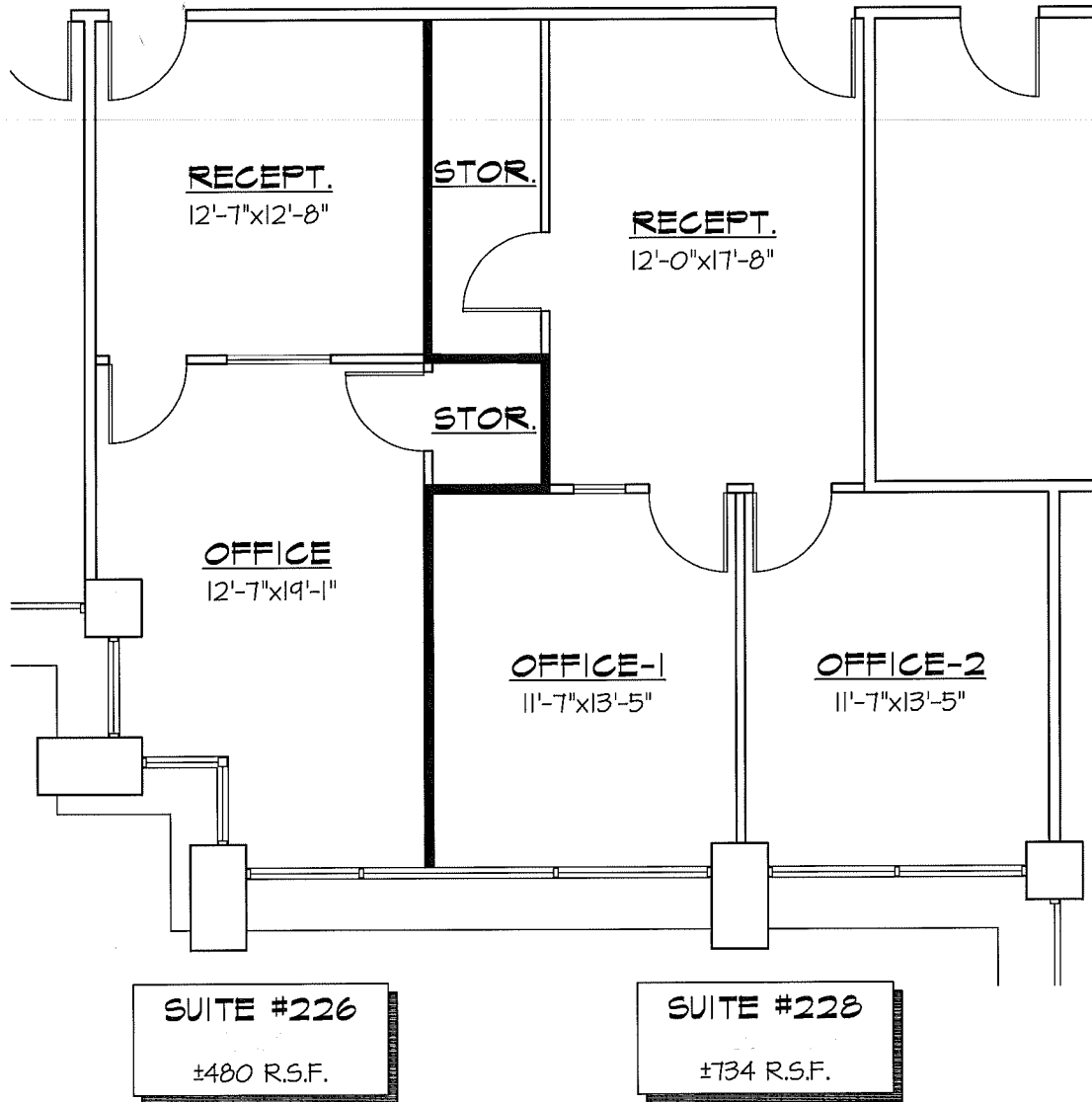


**NOTE:**

The layout, dimensions, and designs depicted in this document are subject to change or modification upon review and approval by the local building official through a formal plan check/permit process. No construction is to commence or be performed based upon this document. Any person or entity that does perform construction from this document assumes full responsibility for all applicable building code compliance.



**2659 TOWNSGATE ROAD,  
SUITES #226-#228  
CONCEPTUAL SPEC SUITES**

SCALE: NTS

JULY 02, 2010

